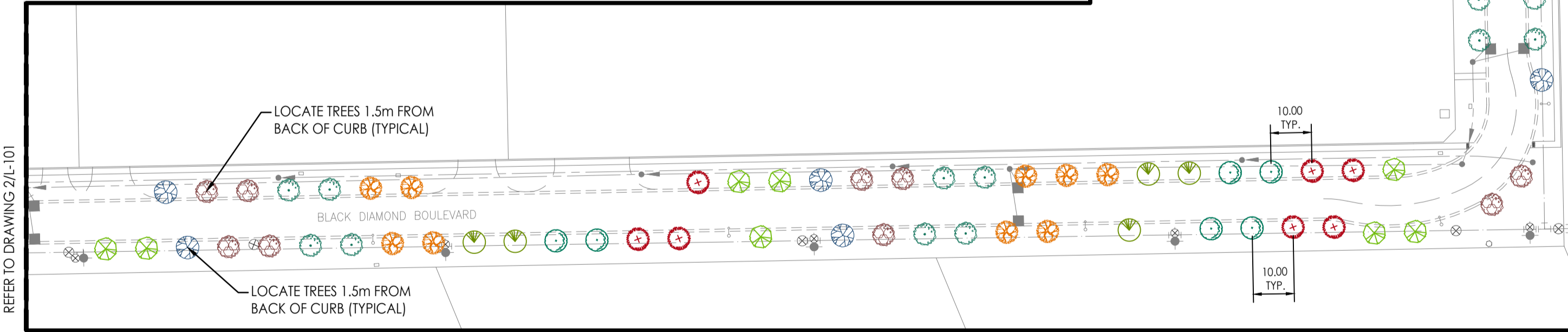


- TREE PLANTING NOTES:**
- LAYOUT OF PLANT MATERIAL TO BE APPROVED BY CONTRACT ADMINISTRATOR PRIOR TO INSTALLATION.
 - PIT TO BE DUG WITH BACK HOE NOT TREE SPADE.
 - CONTRACTOR TO ENSURE STAKES DO NOT PENETRATE ROOT BALL.
 - SECURE STAKES TO TREE @ APPROX. 2/3 TOTAL TREE HEIGHT ABOVE FIN. GRADE.
 - TREE SHALL BE PRUNED IMMEDIATELY AFTER PLANTING TO REMOVE DEAD, BROKEN, DISEASED, DYING OR RUBBING BRANCHES. CO-DOMINANT STEMS LESS THAN 100mm (4") DIA. AT THE FORKS SHALL BE PRUNED OFF AND ONE MAIN STEM SHOULD REMAIN. TREE TOPPING OR HEADING IS NOT PERMITTED AT ANY TIME.
 - STAKES & TIES TO BE REMOVED BY CONTRACTOR AT END OF MAINTENANCE PERIOD AND UPON ACCEPTANCE BY CONTRACT ADMINISTRATOR.
 - MULCH SHALL CONSIST OF CHIPS NOT LESS THAN 15mm NOT LARGER THAN 75mm IN SIZE AND NOT MORE THAN 20mm THICK.
 - CONTRACT ADMINISTRATOR TO INSPECT TREE INSTALLATIONS TO CONFIRM PROPER DEPTH OF PLANTING.
 - ALSO REFER TO CITY OF WINNIPEG TREE PLANTING AND MAINTENANCE SPECIFICATION.

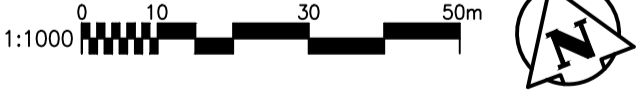
2 TYPICAL DECIDUOUS TREE PLANTING
L-102 1:25

PLANT SCHEDULE

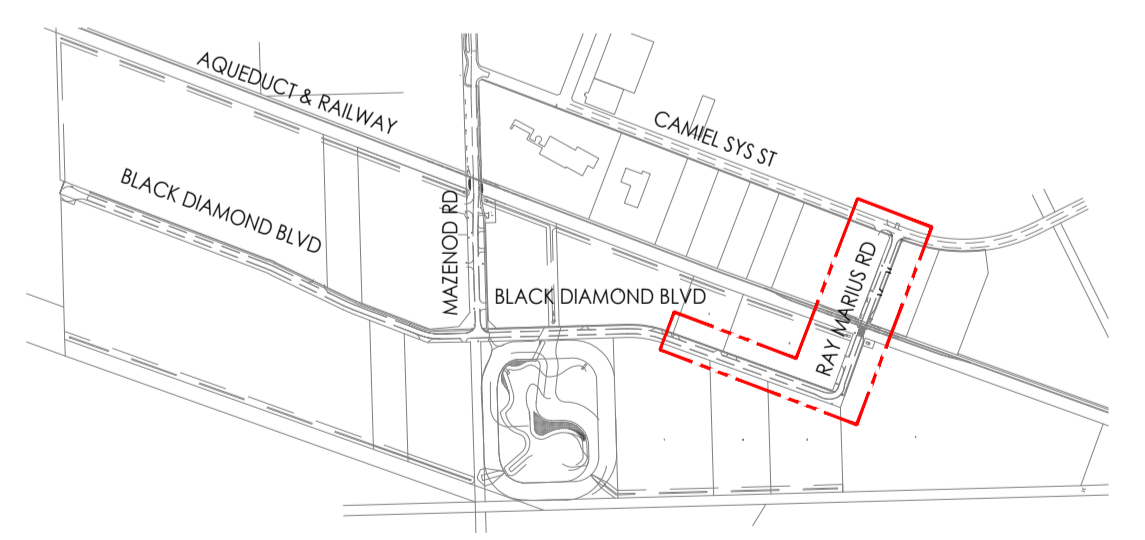
TOTAL	COMMON NAME	BOTANICAL NAME	SIZE AND BRANCHES (shown are minimum specifications)	SPACING
LARGE DECIDUOUS TREES				
35	BARON MANITOBA MAPLE	<i>Acer negundo 'Baron'</i>	60-70mm Caliper, 3.5 - 5.0m ht., 8&B 10 Major Branches	AS SHOWN
4	SILVER CLOUD MAPLE	<i>Acer saccharinum 'Silver Cloud'</i>	60-70mm Caliper, 3.5 - 5.0m ht., 8&B 10 Major Branches	AS SHOWN
4	AMERICAN BASSWOOD	<i>Tilia americana</i>	60-70mm Caliper, 3.5 - 5.0m ht., 8&B 10 Major Branches	AS SHOWN
6	TRIUMPH ELM	<i>Ulmus x 'Triumph'</i>	60-70mm Caliper, 3.5 - 5.0m ht., 8&B 10 Major Branches	AS SHOWN
MEDIUM DECIDUOUS TREES				
36	OHIO BUCKEYE	<i>Aesculus glabra</i>	50-60mm Caliper, 3.0 - 4.5m ht., 8&B 8 Major Branches	AS SHOWN
18	PRAIRIE HORIZON ALDER	<i>Alnus hispida 'Horbin'</i>	50-60mm Caliper, 3.0 - 4.5m ht., 8&B 8 Major Branches	AS SHOWN
50	DELTA HACKBERRY	<i>Celtis occidentalis 'Delta'</i>	50-60mm Caliper, 3.0 - 4.5m ht., 8&B 8 Major Branches	AS SHOWN
38	GOLDEN CASCADE LINDEN	<i>Tilia cordata 'Golden Cascade'</i>	50-60mm Caliper, 3.0 - 4.5m ht., 8&B 8 Major Branches	AS SHOWN
36	DROPMORE LINDEN	<i>Tilia x 'flavescens' 'Dropmore'</i>	50-60mm Caliper, 3.0 - 4.5m ht., 8&B 8 Major Branches	AS SHOWN
40	DISCOVERY ELM	<i>Ulmus davidiana japonica 'Discovery'</i>	50-60mm Caliper, 3.0 - 4.5m ht., 8&B 8 Major Branches	AS SHOWN
33	NIGHT RIDER ELM	<i>Ulmus davidiana japonica 'Night Rider'</i>	50-60mm Caliper, 3.0 - 4.5m ht., 8&B 8 Major Branches	AS SHOWN
SMALL DECIDUOUS TREES				
6	AMUR MAPLE	<i>Acer ginnala</i>	50-60mm Caliper, 3.0 - 4.5m ht., 8&B 8 Major Branches	AS SHOWN
6	SHOWY MOUNTAINASH	<i>Sorbus decora</i>	50-60mm Caliper, 3.0 - 4.5m ht., 8&B 8 Major Branches	AS SHOWN
9	MING AMUR CHERRY	<i>Prunus x 'Ming'</i>	50-60mm Caliper, 3.0 - 4.5m ht., 8&B 8 Major Branches	AS SHOWN



1 PLANTING PLAN - BLACK DIAMOND BOULEVARD & RAY MARIUS ROAD
L-102 1:1000



REFER TO L-101 FOR NOTES



3 KEY PLAN
L-102 1:15000

150 WM	WATERMAIN			HYDRO				
+	HYDRANT			M.T.S.				
○	VALVE			CONCRETE				
300 L/S	LAND DRAINAGE SEWER			ASPHALT				
250 W/S	WASTE WATER SEWER			SIDEWALK				
●	MANHOLE			PROPERTY LINE				
■	CATCH BASIN			SURVEY BAR				
▽	CURB INLET			DITCH				
—	JUNCTIONS							
—	CULVERT							
—	GAS							
—	EXISTING	LEGEND-PLAN	PROPOSED	EXISTING	LEGEND-PLAN	PROPOSED	EXISTING	LEGEND-PROFILE

LOCATION APPROVED UNDERGROUND STRUCTURES

SUPV. U/G STRUCTURES COMMITTEE DATE

NOTE:
LOCATION OF UNDERGROUND STRUCTURES AS SHOWN ARE BASED ON THE BEST INFORMATION AVAILABLE BUT NO GUARANTEE IS GIVEN THAT ALL EXISTING UTILITIES ARE SHOWN OR THAT THE GIVEN LOCATIONS ARE EXACT. CONFIRMATION OF EXISTENCE AND EXACT LOCATION OF ALL SERVICES MUST BE OBTAINED FROM THE INDIVIDUAL UTILITIES BEFORE PROCEEDING WITH CONSTRUCTION.

B.M. ELEV.			
NO.	REVISIONS	DATE	BY
0	ISSUED FOR TENDER	25.02.10	D.B.

Stantec
500 - 311 Portage Avenue, Winnipeg MB Canada R3B 2B9
Tel. 204.489.5900 Fax. 204.453.9012 www.stantec.com

DESIGNED BY: W.F. CHECKED BY: D.B.
DRAWN BY: W.F. APPROVED BY: D.B.

HOR. SCALE: AS SHOWN VERTICAL: —
RELEASED FOR CONSTRUCTION: DATE

DATE: 2024 .07 .09

ENGINEER'S SEAL

CONTRACT ADMINISTRATOR DRAWING NO. L-102

THE CITY OF WINNIPEG
DEVELOPER: PROPERTY PLANNING AND DEVELOPMENT DEPT.

ST. BONIFACE INDUSTRIAL PARK - PHASE 2
BOULEVARD TREES PLANTING
PLANTING PLAN & DETAILS

SHEET 3 OF 3
CAD FILE DRAWING NUMBER 09351-L-101-102.DWG
CITY DRAWING NUMBER 697-2024-L-102

VA:1680 Path: \\1680\351\0300_drawing\0302_alter_files\09_landscape\09351-L-101-102.dwg 2025/02/10 09:43 AM By: Rick Wipf